

CosTech Dental Laboratory

Unit 17-18, Lion Business Park, Dering Way,
Gravesend, Kent, DA12 2DN | email: info@costech.co.uk



1 Dentist Account Details

2 Patient & Job Details

Job ID:

Patient's Name:

Chrome Upper Lower **Repair** Upper Lower

Reline Upper Lower **Additions** Upper Lower

3 Due Dates

Special Tray:

Bite Block:

Try-In:

Re-Try:

Finish:

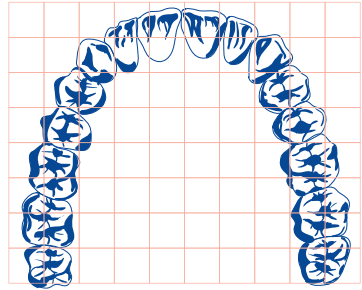
Vita Shade

Circle teeth to be included at **Try-In Stage**

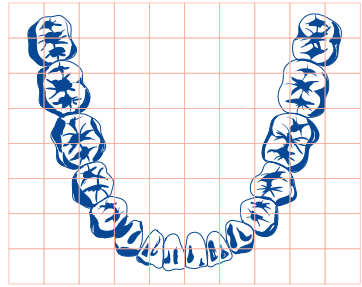
Indicate extractions at **Fit Stage**

8 7 6 5 4 3 2 1 | 1 2 3 4 5 6 7 8

8 7 6 5 4 3 2 1 | 1 2 3 4 5 6 7 8



Design



4 Shade & Notation

CUSTOM MADE DEVICE Certified as conforming to the Medical Device Directive, manufactured and supplied by Costech.

The product here packed is a custom made device for the named patient stated above and conforms to the essential requirements set out in Annex 1 of the EC Medical Device Directive 93/42/EEC dated June 1993 and if any of these requirements are not fully met the details are documented on reverse or attached and despatched to the user.

In the event that the prescriber has supplied some of the materials etc for incorporation in a particular custom made dental appliance then this appliance cannot be guaranteed to fully meet with the applicable relevant essential requirements.

** The Dr named above takes responsibility for prescribing the correct material/ alloy in accordance to current regulations in their region.*

For your patient statement please go to:
www.costech.co.uk/patientstatement

The grounds for placing such a device on the market is that the risk of compromising the patient's health and safety by using materials etc supplied by the prescriber is assessed as minimal. This risk assessment relies upon a duly qualified medical practitioner's competence and duty to supply materials etc that is either from a CE marked source or from an appropriate European Competent Authority registered manufacturer of custom-made medical devices.

Q.C. APPROVAL

Please note these items are NOT sterile.

MHRA Registration: 5759