



**CERASMART™**  
from GC

The new hybrid ceramic  
CAD/CAM solution

**Are you  
sure it's not  
ceramics?**

**GC**

# Smart material for Smart applications.



Introducing a new hybrid ceramic block, GC welcomes you into the Smart Age, where you choose the right type of CAD/CAM block for each specific case.

Ceramics - the gold standard in CAD/CAM - and CERASMART look similar in some way. But CERASMART offers unprecedented opportunities for some clinical situations.

- Being capable of absorbing shocks, CERASMART is perfectly suited to challenging occlusal situations
- Its sharp adaptation and resistance to chipping ensure a long-lasting marginal seal
- Its balanced surface hardness will be especially beneficial in reducing the wear of the opposing dentition, while also ensuring a long lasting gloss of the restoration

And on top of that, **CERASMART** also offers you

- Efficient milling process with a short milling time and enhanced service life of milling tools
- Excellent polishability displaying an impressive gloss after a short polishing time
- Easy characterisation using Optiglaze Color, in just a few minutes

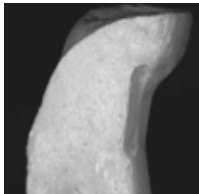
## When **precision** and **durability** ought to unite.

CERASMART proves that you do not have to choose between precision and speed: a **short milling time unites with extremely sharp margins**, with no visible chipping, even at high magnification.

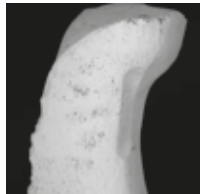
### Milling Precision

Source: GCC R&D.

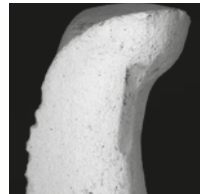
CERASMART™



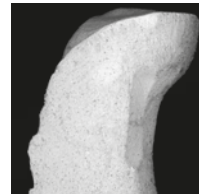
VITABLOCS® Mark II\*



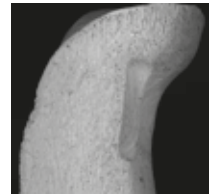
IPS e.max® CAD\*



VITA ENAMIC®\*



LAVA™ Ultimate\*



### Unique Technology

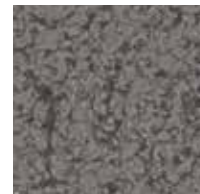
SEM images;  
Source: GCC R&D

CERASMART is based on the latest GC filler technology, featuring ultra-fine homogeneously dispersed fillers offering both a **long-lasting polish** and less wear to the opposing dentition. Its **high radio-opacity** will also make the follow-up of your restorations easier.

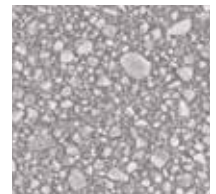
CERASMART™  
(Flexible hybrid ceramics)



VITA ENAMIC®\*  
(Hybrid Ceramics)



LAVA™ Ultimate\*  
(Resin Nano Ceramics)



## When **aesthetics** and **CAD/CAM** should connect

Cerasmart offers your patient aesthetic restorations, invisible under all circumstances thanks to its **optimal balance of fluorescence and opalescence** and natural shade integration.

CERASMART™  
A2 HT

LAVA™ Ultimate  
A2 HT\*

VITA ENAMIC®  
1M2 H\*

IPS e.max® CAD  
A2 HT\*



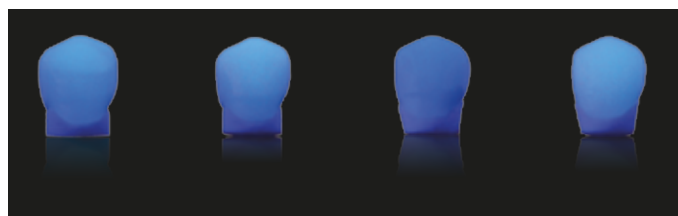
TRANSMITTED LIGHT

CERASMART™  
A3LT

LAVA™ Ultimate  
A3 LT\*

VITA ENAMIC®  
2M2 T\*

IPS e.max® CAD  
A3 LT\*



BLACK LIGHT

\*Not a trademark of GC Europe

# Increase your CAD/CAM restorative options with CERASMART™!

BEFORE



AFTER



Top left: Inlay restoration, courtesy of Dr. Gumpei Koike, Japan

Top right: Endo-crown, courtesy of Dr Gilles Aldié, (e-Dentisterie), France

BEFORE



AFTER



BEFORE



AFTER



Below Left: Onlay restoration, courtesy of Dr. Rich Rosenblatt, USA

Below right: Crown restoration, courtesy of Prof. Marleen Peumans, Belgium

BEFORE



AFTER



## A smarter system for a smarter workflow

### No glazing, no firing

The **final steps for an aesthetic restoration are made easier** with two options to choose from: easy manual polishing or quick characterisation with the stroke of a brush ... using the wear resistant colouring glaze, Optiglaze Color.

#### Characterisation



> Ceramic Primer II



> Optiglaze Color



> Result



CERASMART™

> Finishing & Polishing



> DiaPolisher Paste

> Result



Polishing

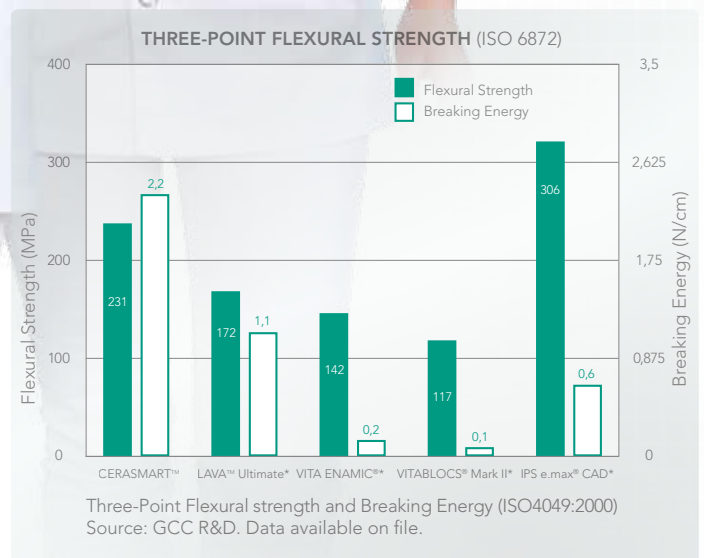
**SAME** looks, **SAME** approach.

So where is the **difference**?



When **strength** and **flexibility** need to blend together.

**CERASMART** features the highest flexural strength in its category, and is superior to the classical feldspathic ceramic blocks. Most importantly, it also offers a **high flexibility (breaking energy)** to buffer masticatory pressure and sustain the most challenging clinical situations.



# Welcome to the **SMART** age

Discover **CERASMART™** and the products that make it stand out  
[www.gceurope.com](http://www.gceurope.com)



**Ceramic Primer II** is the latest primer from GC, which can be used for all types of ceramics (including glass ceramics, zirconia and alumina), composites and hybrid ceramics.

**A specialised primer offering strong and durable adhesion...**

The perfect partner for your **CERASMART™** restorations!



Discover **Optiglaze Color**, the new light-cured characterisation material from GC!

**Colouring, increased wear resistance and high surface gloss with the stroke of a brush...**

Because everything looks better in colour!



**DiaPolisher** is GC's polishing paste featuring ultra-fine diamond particles – just follow your usual polishing procedure and use **DiaPolisher Paste** to achieve a higher gloss.

Improve your aesthetic results in one easy step!

## **CERASMART™** – the best of class hybrid ceramic material from GC



### **SHADES:**

**High Translucency (HT):**

A1 HT, A2 HT, A3 HT, A3.5 HT, B1 HT

- Mainly to replace enamel
- Use in cases of inlays, onlays, veneers, partial and full crowns

**Low Translucency (LT):**

A1 LT, A2 LT, A3 LT, A3.5 LT, B1 LT

- For replacement of dentin and enamel structures
- Use to mask discoloured preparations, in particular for crowns

**Bleach Shade (BL)**

### **SIZES:**

available in sizes 12, 14, and 14L

### **PACKAGES:**

CERASMART for Cerec, refill of 5 blocks

CERASMART Universal, refill of 5 blocks

CERASMART Advanced Kit

CERASMART Starter Kit

### **GC EUROPE N.V.**

Head Office  
Interleuvenlaan 33  
B-3001 Leuven  
Tel. +32.16.74.10.00  
Fax. +32.16.40.48.32  
info@gceurope.com  
<http://www.gceurope.com>

